

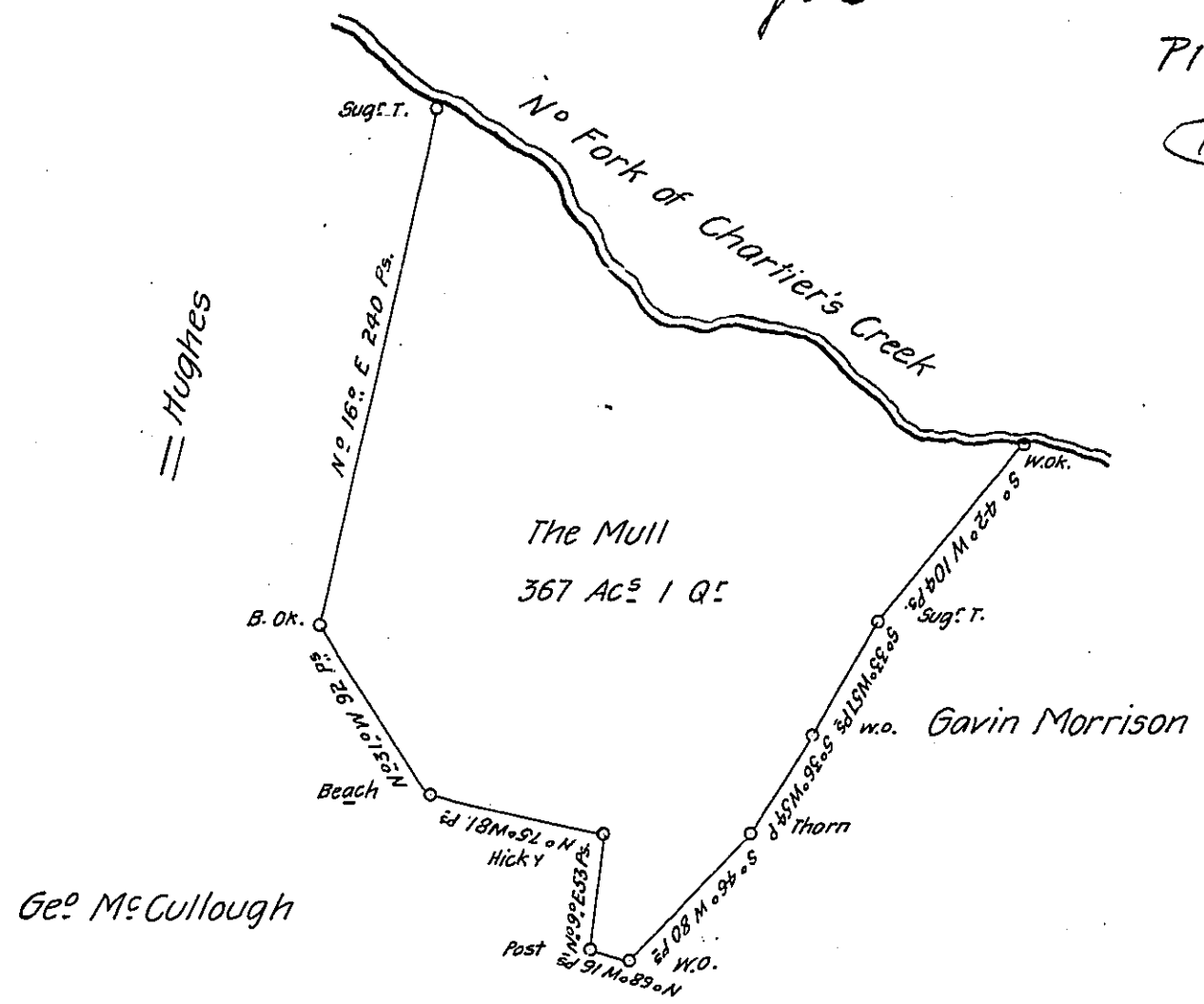
See Page 3

4

P12-403

1-95

- Courses &
the Creek
- S 69° E 24 P 5
 - S 49° E 40 D 9
 - S 30° E 52 D 9
 - S 40° E 32 D 9
 - S 87° E 66 D 9
 - S 37° E 64 D 9
 - S 84° E 53 D 9



A Draught of a Survey called "The Mull" situate on the
N^o Branch of Chartiers C^k in Washington County contain^g 367 Ac^s 1 R^d
and the usual Allow^{ce} for Highways &c. executed Oct^r 15th 1787 in pursu-
ance of a Warrant granted to Alex^r M^cAlister for 367 A^s dated Sept^r 6th

1787. Presley Nevill }
Matt^w Ritchie } D^{fs}.

Jn^o Lukens Esq^r S. Gen^l

IN TESTIMONY that the above is a copy of the original remaining on file in
the Department of Internal Affairs of Pennsylvania, made
conformably to an Act of Assembly approved the 16th day of
February, 1833, I have hereunto set my Hand and caused
the Seal of said Department to be affixed at Harrisburg,
this eighth day of December 1905

Loe B Brown
Secretary of Internal Affairs.